

a COPYRIGHT - These drawings remain the exclusive copyright of ADM Architects. Reproductions in any form whether electronic, digital or otherwise shall not be allowed except by express permission granted in writing by ADM Architects.
 a FIGURED DIMENSIONS - These drawings are not to be scaled. Figured dimensions shall be used in all cases.
 a DISCREPANCIES IN DIMENSIONS/POSITIONS/LOCATIONS/FINISHES - The Contractor is to verify any dimensional, location or finish discrepancy with ADM Architects prior to any physical construction or setting out so that ADM Architects is given the opportunity to resolve potential discrepancies or conflicts in sufficient time without causing adverse work. The Contractor shall be responsible for notifying ADM Architects of any such discrepancy or conflict that may arise on site.
 a CO-ORDINATION OF WORKS - These drawings are to be read in conjunction with the full set of consultant's drawings, specifications, reports and DA conditions.
 a NOMINATED ARCHITECT - The nominated Architect for ADM Projects (Australia) Pty Ltd T/A ADM Architects is Angelo Di Martino ARB No.7608

ISSUE	DATE	DESCRIPTION
A	30.05.11	issued for DA
B	20.09.11	amended for DA approval

NOT FOR CONSTRUCTION

adm

ARCHITECTS

94 Kembla St, Wollongong NSW 2500 PO Box 3061 Wollongong
 ph: 02 4228 6400 fax: 02 4228 6455 www.admarchitects.com.au

Project
 RESIDENTIAL DEVELOPMENT COMPRISING OF
 15 X 2 BED UNITS, 17 X 3 BED UNITS &
 2 X 3 BED PENTHOUSE UNITS WITH
 7 VISITORS PARKING SPACES &
 BASEMENT PARKING FOR 56 CARS
 At
 LOTS A & B D.P 415263, LOT 2 D.P 331687
 No.32 & 34 CHURCH STREET
 WOLLONGONG
 For

PNA DEVELOPMENTS pty ltd

Title
 DEVELOPMENT APPLICATION
 SHADOW DIAGRAMS SHEET 1

Scale	Date	
N.T.S.	JUNE 2011	
Drawn	Checked	
dlf	ADM	
Project No.	Drawing No.	Issue
2010-27	A-18	B

copyright of adm architects

9 a m

10 a m

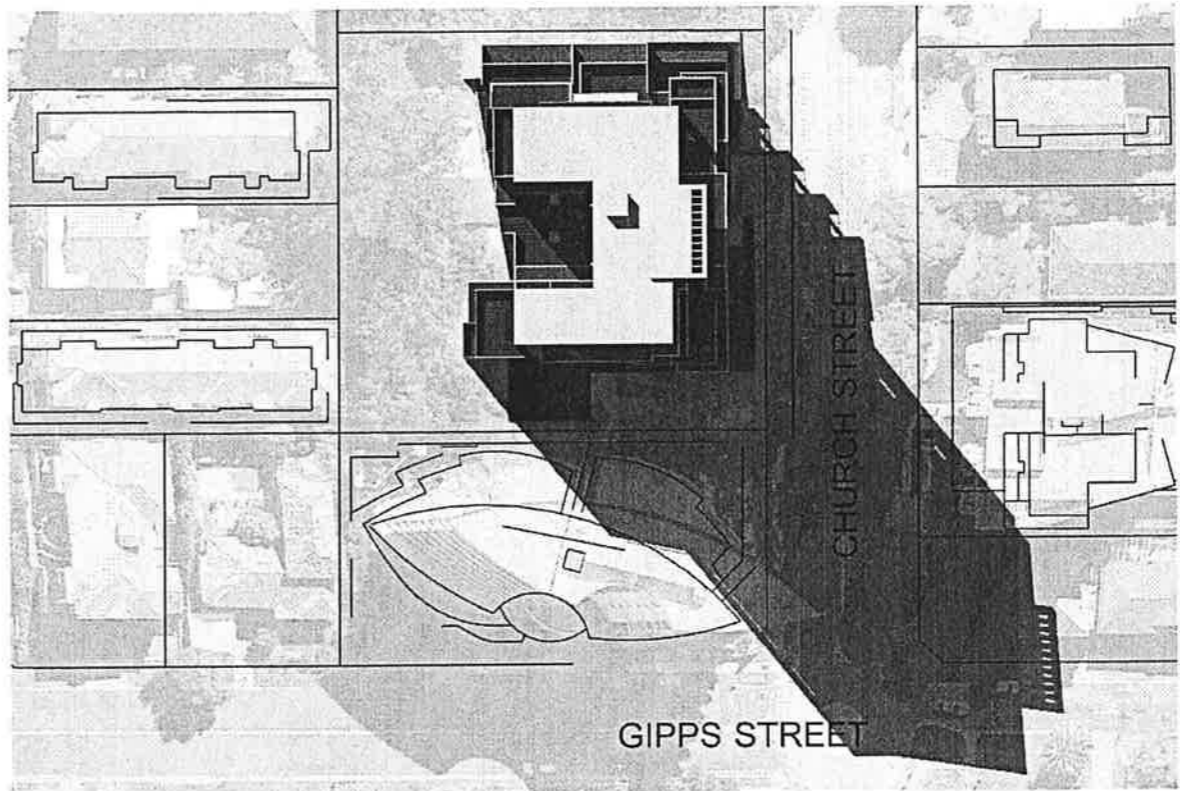
11 a m

12 p m

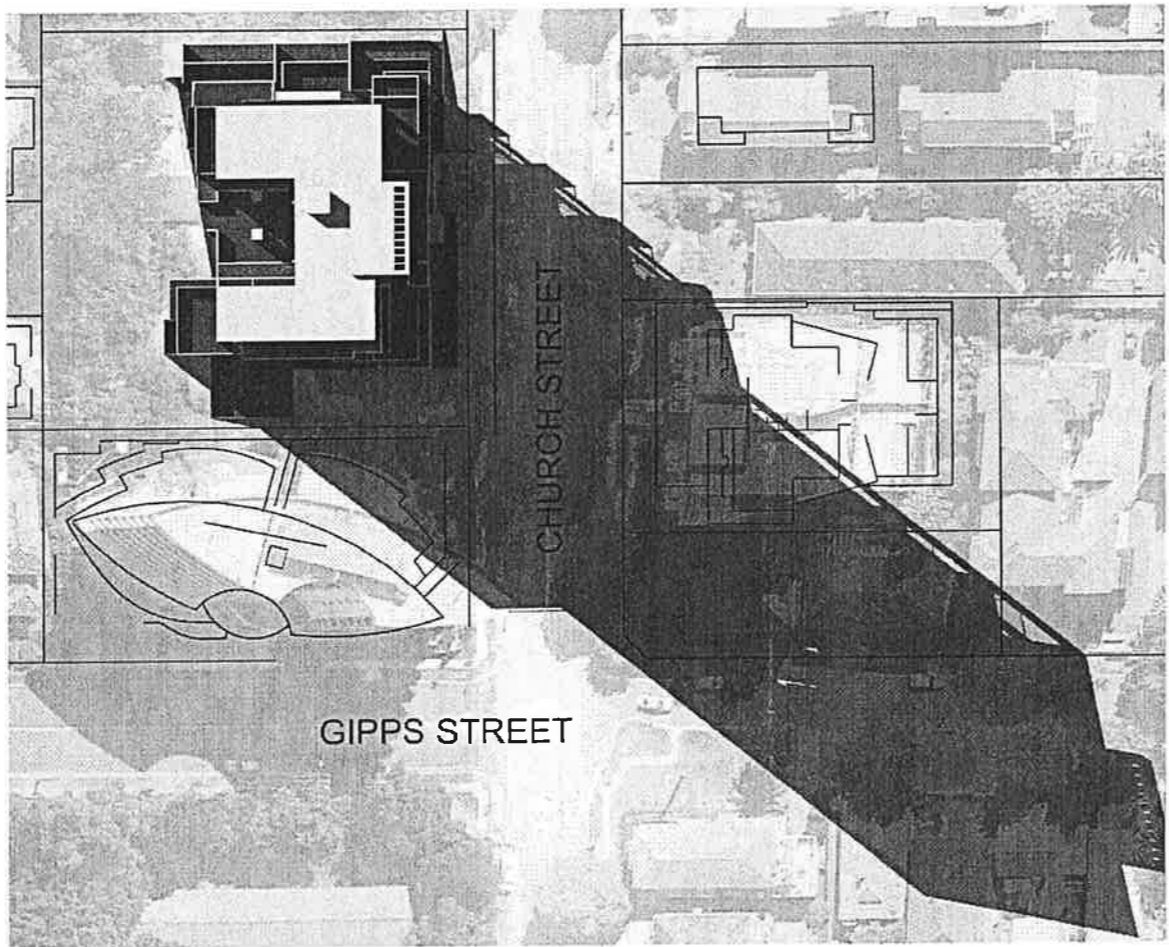
SHADOW DIAGRAMS 21st JUNE WINTER SOLSTICE



1 pm



2 pm



3 pm

SHADOW DIAGRAMS 21st JUNE WINTER SOLSTICE

© COPYRIGHT - These drawings remain the exclusive copyright of ADM Architects. Reproductions in any form whether electronic, digital or otherwise shall not be allowed except by express permission granted in writing by ADM Architects.
 o FIGURED DIMENSIONS - These drawings are not to be scaled. Figured dimensions shall be used in all cases.
 o DISCREPANCIES IN DIMENSIONS/POSITIONS/LOCATIONS/FINISHES - The Contractor is to verify any dimensional, location or finish discrepancy with ADM Architects prior to any physical construction or setting out so that ADM Architects is given the opportunity to resolve potential discrepancies or conflicts in sufficient time without causing abortive work. The Contractor shall be responsible for notifying ADM Architects of any such discrepancy or conflict that may arise on site.
 o CO-ORDINATION OF WORKS - These drawings are to be read in conjunction with the full set of consultant's drawings, specifications, reports and DA conditions.
 o NOMINATED ARCHITECT - The nominated Architect for ADM Projects (Australia) Pty Ltd T/A ADM Architects is Angelo Di Martino ARB No.7608

ISSUE	DATE	DESCRIPTION
A	30.05.11	issued for DA
B	20.09.11	amended for DA approval

NOT FOR CONSTRUCTION

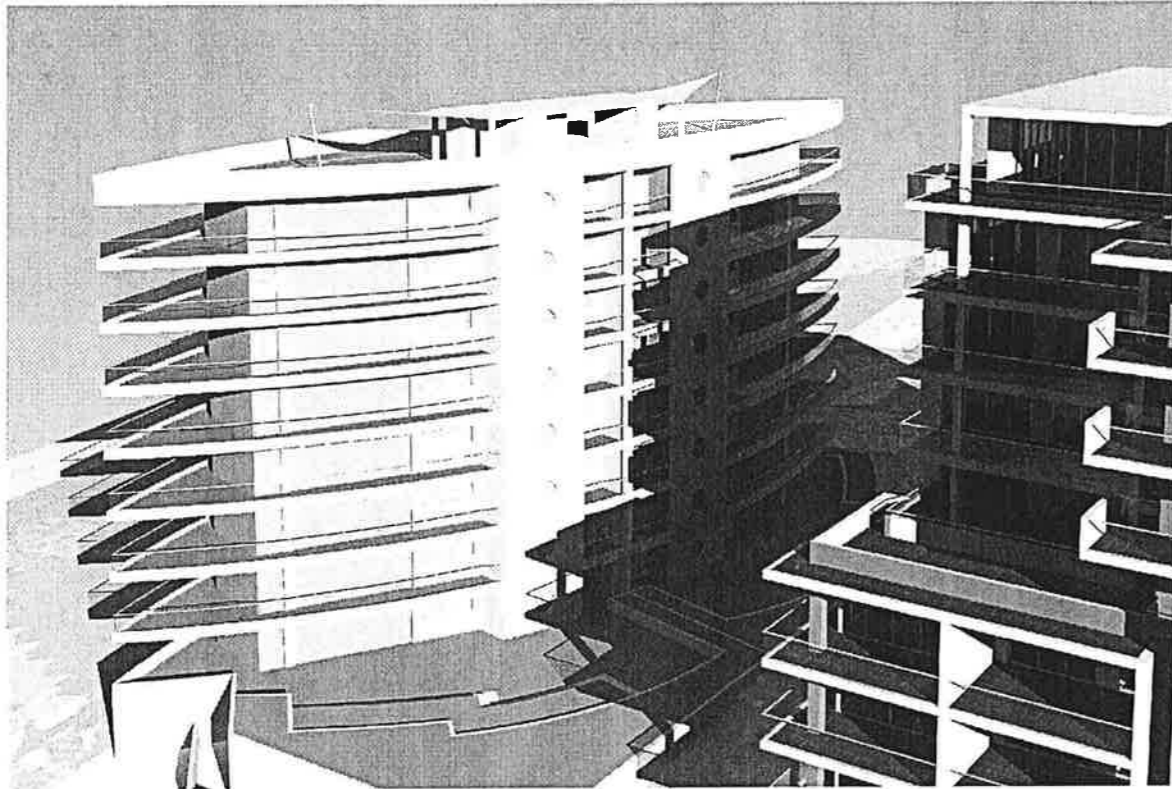
94 Kembla St, Wollongong NSW 2500 PO Box 3061 Wollongong
 ph: 02 4228 6400 fax: 02 4228 6455 www.admarchitects.com.au

Project
 RESIDENTIAL DEVELOPMENT COMPRISING OF
 15 X 2 BED UNITS, 17 X 3 BED UNITS &
 2 X 3 BED PENTHOUSE UNITS WITH
 7 VISITORS PARKING SPACES &
 BASEMENT PARKING FOR 56 CARS
 At
 LOTS A & B D.P 415263, LOT 2 D.P 331687
 No.32 & 34 CHURCH STREET
 WOLLONGONG
 For

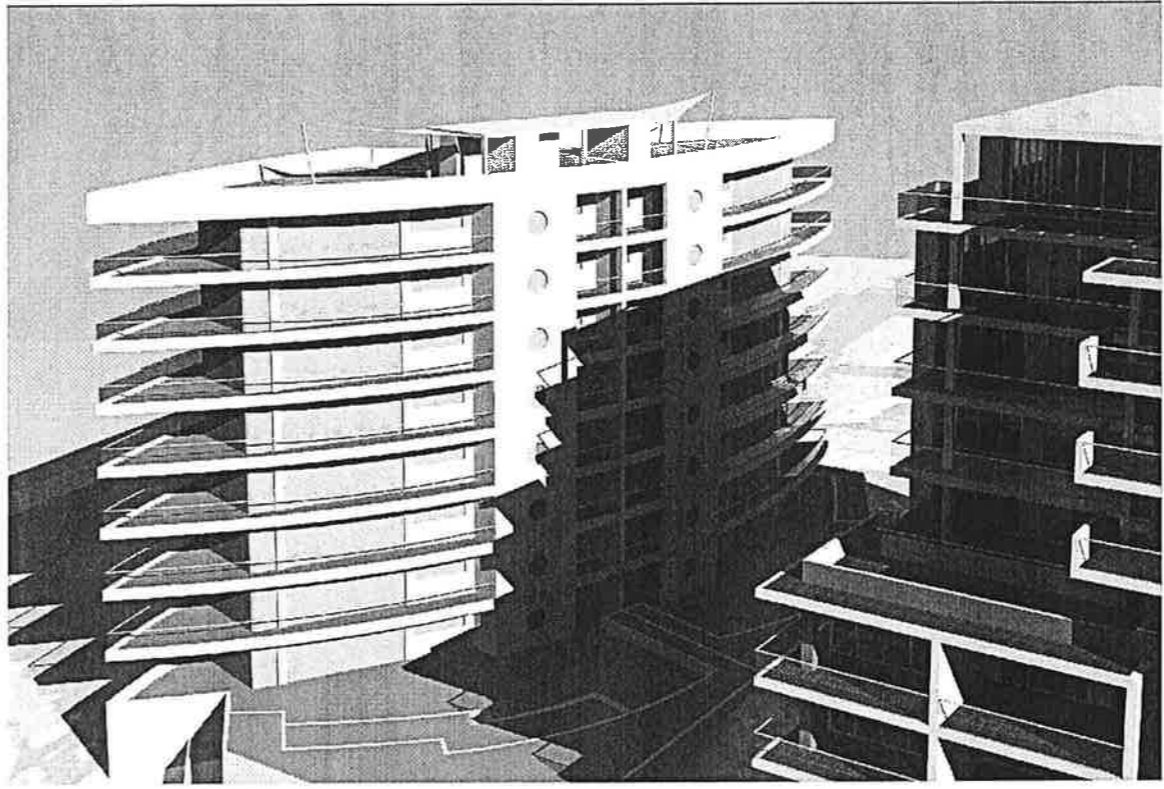
PNA DEVELOPMENTS pty ltd

Title DEVELOPMENT APPLICATION SHADOW DIAGRAMS SHEET 2		
Scale N.T.S.	Date JUNE 2011	
Drawn dlf	Checked ADM	
Project No. 2010-27	Drawing No. A-19	Issue B

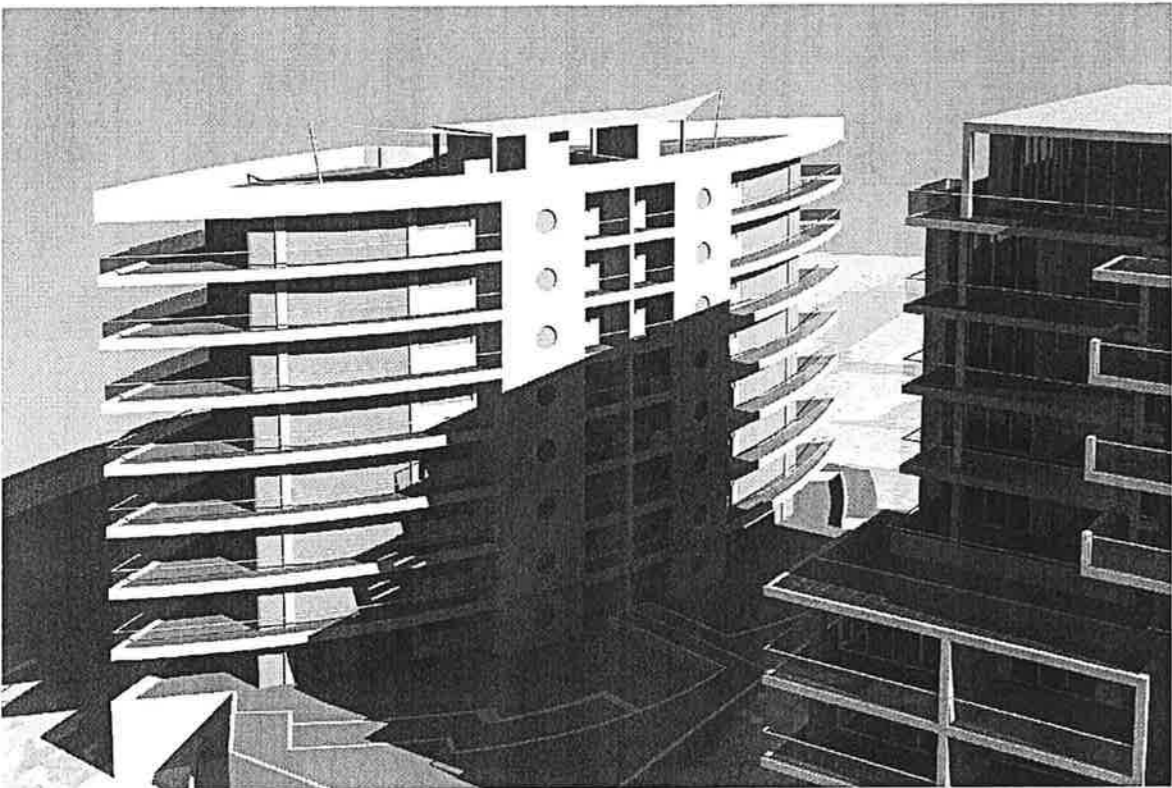
copyright of adm architects



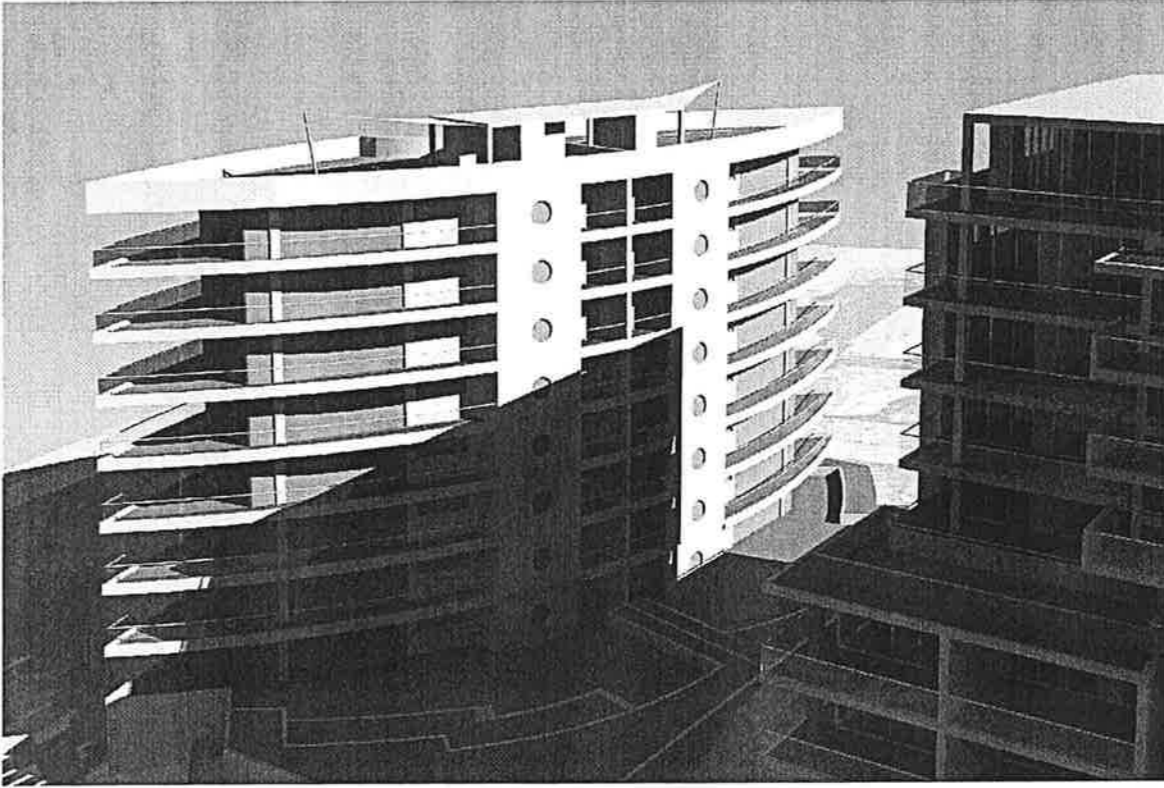
9 a m



10 a m



11 a m



12 p m

3D SHADOW DIAGRAMS 21st JUNE WINTER SOLSTICE

© COPYRIGHT - These drawings remain the exclusive copyright of ADM Architects. Reproductions in any form whether electronic, digital or otherwise shall not be allowed except by express permission granted in writing by ADM Architects.
 a FIGURED DIMENSIONS - These drawings are not to be scaled. Figured dimensions shall be used in all cases.
 b DISCREPANCIES IN DIMENSIONS/POSITIONS/LOCATIONS/FINISHES - The Contractor is to verify any dimensional, location or finish discrepancy with ADM Architects prior to any physical construction or setting out so that ADM Architects is given the opportunity to resolve potential discrepancies or conflicts in sufficient time without causing abortive work. The Contractor shall be responsible for notifying ADM Architects of any such discrepancy or conflict that may arise on site.
 c CO-ORDINATION OF WORKS - These drawings are to be read in conjunction with the full set of consultant's drawings, specifications, reports and DA conditions.
 d NOMINATED ARCHITECT - The nominated Architect for ADM Projects (Australia) Pty Ltd T/as ADM Architects is Angelo Di Martino ABB No.7608

ISSUE	DATE	DESCRIPTION
A	30.05.11	issued for DA
B	20.09.11	amended for DA approval

NOT FOR CONSTRUCTION



94 Kembla St, Wollongong NSW 2500 PO Box 3061 Wollongong
 ph: 02 4228 6400 fax: 02 4228 6455 www.admarchitects.com.au

Project
 RESIDENTIAL DEVELOPMENT COMPRISING OF
 15 X 2 BED UNITS, 17 X 3 BED UNITS &
 2 X 3 BED PENTHOUSE UNITS WITH
 7 VISITORS PARKING SPACES &
 BASEMENT PARKING FOR 56 CARS

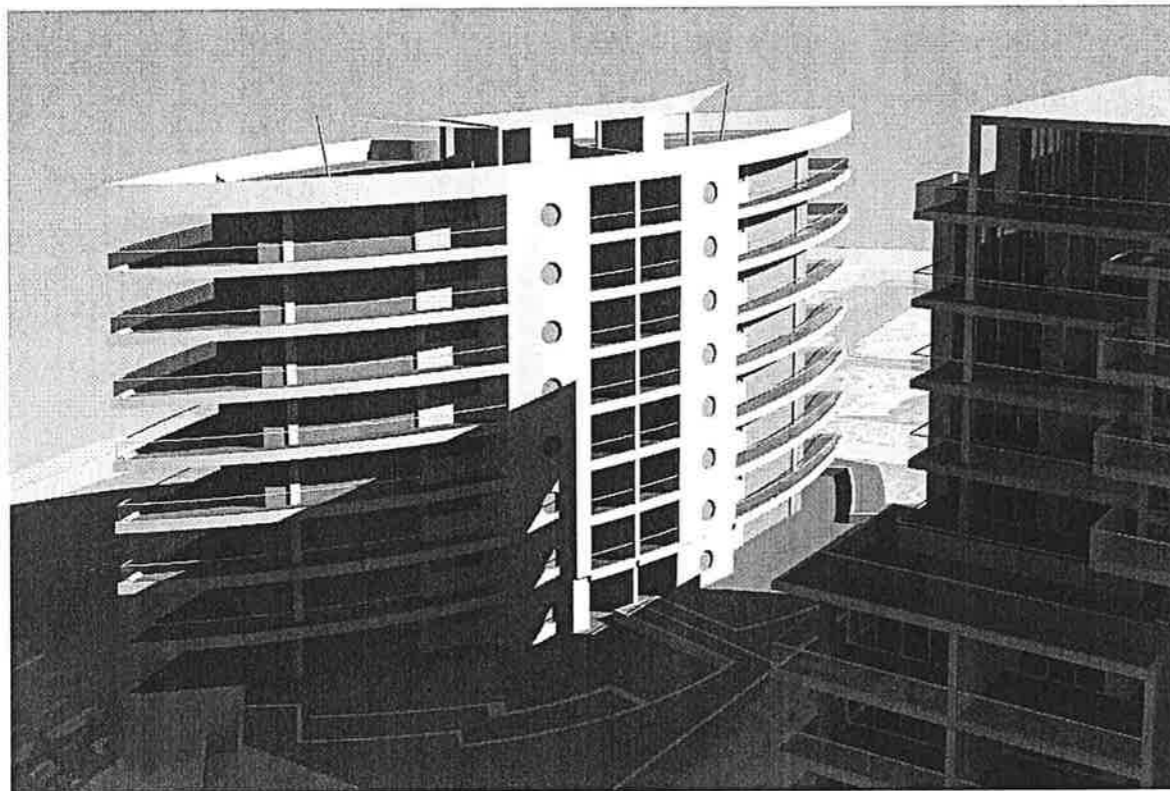
At
 LOTS A & B D.P 415263, LOT 2 D.P 331687
 No.32 & 34 CHURCH STREET
 WOLLONGONG

For
 PNA DEVELOPMENTS pty Ltd

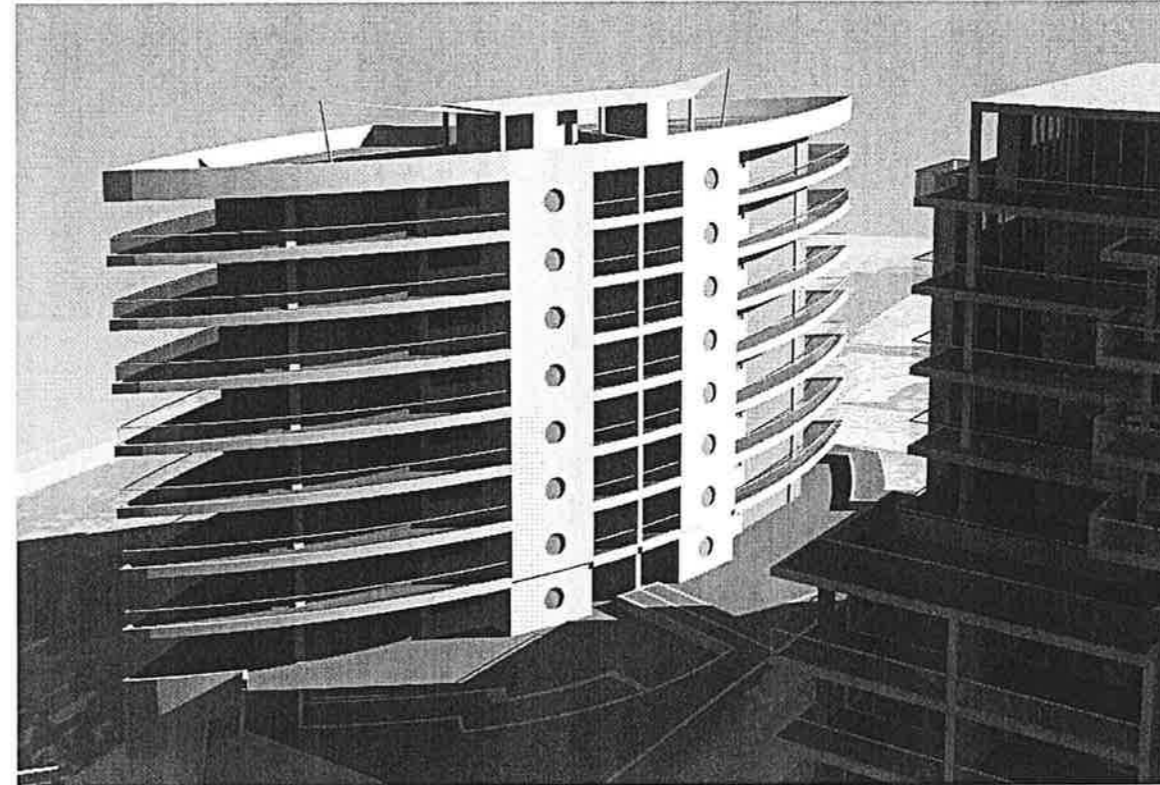
Title
 DEVELOPMENT APPLICATION
 3D SHADOW DIAGRAMS SHEET 1

Scale N.T.S.	Date JUNE 2011
Drawn dlf	Checked ADM
Project No. 2010-27	Drawing No. A-20
	Issue B

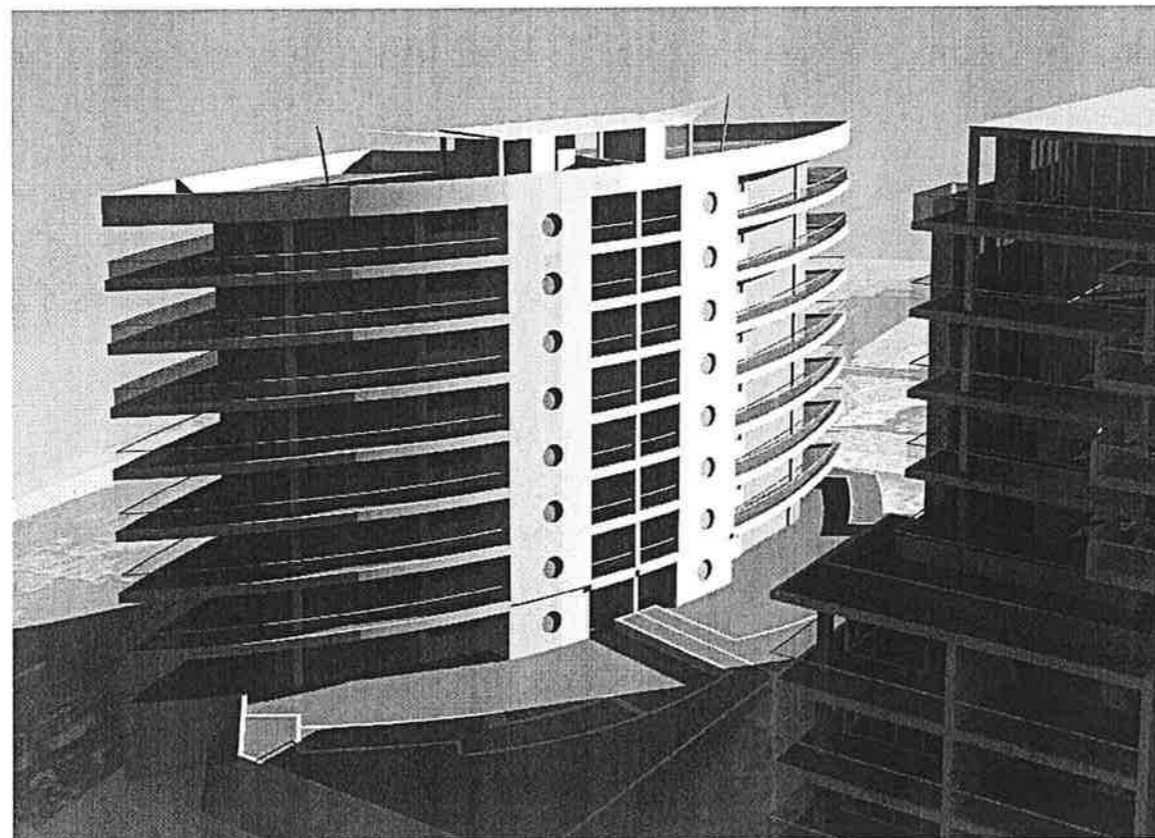
copyright of adm architects



1 pm



2 pm



3 pm

3D SHADOW DIAGRAMS 21st JUNE WINTER SOLSTICE

© COPYRIGHT - These drawings remain the exclusive copyright of ADM Architects. Reproductions in any form whether electronic, digital or otherwise shall not be allowed except by express permission granted in writing by ADM Architects.
 a FIGURED DIMENSIONS - These drawings are not to be scaled. Figured dimensions shall be used in all cases.
 b DISCREPANCIES IN DIMENSIONS/POSITIONS/LOCATIONS/FINISHES - The Contractor is to verify any dimensional, location or finish discrepancy with ADM Architects prior to any physical construction or sending out so that ADM Architects is given the opportunity to resolve potential discrepancies or conflicts in sufficient time without causing abortive work. The Contractor shall be responsible for notifying ADM Architects of any such discrepancy or conflict that may arise on site.
 c CO-ORDINATION OF WORKS - These drawings are to be read in conjunction with the full set of consultant's drawings, specifications, reports and DA conditions.
 d NOMINATED ARCHITECT - The nominated Architect for ADM Projects (Australia) Pty Ltd T/as ADM Architects is Angelo Di Martino ARB No.7608

ISSUE	DATE	DESCRIPTION
A	30.05.11	issued for DA
B	20.09.11	amended for DA approval

NOT FOR CONSTRUCTION



94 Kembla St, Wollongong NSW 2500 PO Box 3061 Wollongong
 ph: 02 4228 6400 fax: 02 4228 6455 www.admarchitects.com.au

Project
 RESIDENTIAL DEVELOPMENT COMPRISING OF
 15 X 2 BED UNITS, 17 X 3 BED UNITS &
 2 X 3 BED PENTHOUSE UNITS WITH
 7 VISITORS PARKING SPACES &
 BASEMENT PARKING FOR 56 CARS

At
 LOTS A & B D.P 415263, LOT 2 D.P 331687
 No.32 & 34 CHURCH STREET
 WOLLONGONG

For
 PNA DEVELOPMENTS Pty Ltd

Title
 DEVELOPMENT APPLICATION
 3D SHADOW DIAGRAMS SHEET 2

Scale	Date
N.T.S.	JUNE 2011
Drawn	Checked
dlf	ADM

Project No.	Drawing No.	Issue
2010-27	A-21	B

copyright of adm architects